

glo.stk.4™ spec sheet 90CRI

LED

body illumination

flexible planar LED lighting sheet in 3000K, 3500K, or 4000K (90CRI), utilizing emitters rated at >77,000hrs L70 per TM21-11 from LM80 data. silver braid power cord standard.

downlight (optional)

COB in 3000K, 3500K, or 4000K (90 CRI) rated >36,000 hours L70 (6.8K) per LM-80 test data, 71,000 hours projected life per IEM TM-21. four beam spreads to choose.

downlight optics

LEDiL® Angelina 82mm dia 31mm high (RoHS compliant) available in 20° spot, 30° medium, 50° wide with specular anodized finish. 90° extra wide features matte white highly reflective finish. color mixing sublens standard. standard mounting clamp allows for easy replacement of reflector in field. the typical total beam angle is the full angle measured where the luminous intensity is half of the peak volume.

end caps

ribbed extruded aluminum end caps available in silver anodized and black anodized finishes. or choose from 12 standard painted finishes listed below.

driver

programmable, class 2, class P universal input (120-277v), constant current, 0-10v dimming, 1% minimum dimming level, PF >.9, THD <20%, protections include open and short circuit, overload and over temperature. remote driver enclosure standard. consult factory for distances over 33 feet.

diffuser

4" dia. .118" Satinice white acrylic cylinder, featuring light diffusion beads evenly distributed throughout the material for optimum light diffusion.

mounting

5" matte white canopy. single stainless steel cable and field adjustable gripper that allows for exact AFF mounting heights. silver braid power cord standard.

CDVR (optional)

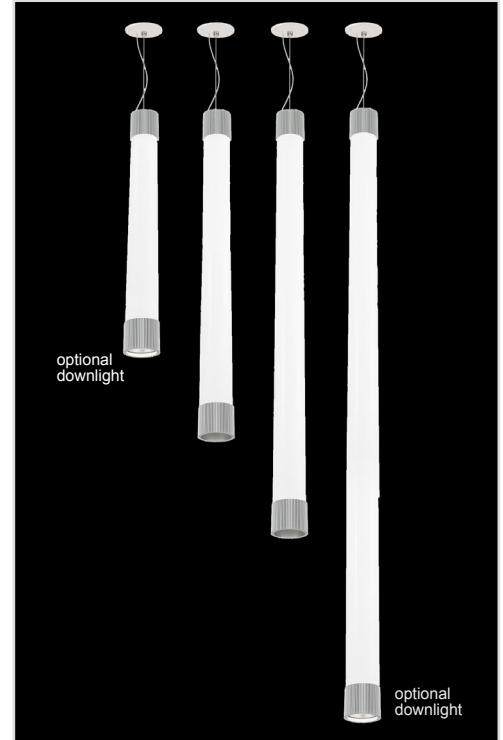
7"dia. spun .064" aluminum canopy in matte white. surface mounted driver.

finish

select from 2 anodized and 12 standard powder coat paint finishes listed below or specify RAL# for custom colors.

emergency

recommend use of inverter (by other). optional WREM: wired for remote EM battery (by other).



catalog number

--	--	--	--	--	--	--

size	body illumination		downlight		anodized finishes	options		
	CCT	lumens	CCT	beam		6FT	72" cable	
P9624.LV (2ft) 4"dia X 31"ht	30	3000K	LO	1400 lm	30	3000K	S 20° spot	12FT 144" cable
	35	3500K	HI	2150 lm	35	3500K	M 30° med	CDVR surface-mounted driver canopy
	40	4000K	CL*	xxxx lm (940lm-3200lm) custom lumens consult factory	40	4000K	W 50° wide	WREM wired for remote EM battery pack (by other) (see note above)
P9636.LV (3ft) 4"dia X 43"ht	30	3000K	LO	1880 lm	NDL		XW 90° extra wide	ELD EldoLED*
	35	3500K	HI	3750 lm	no downlight			LUT Lutron* *consult factory
	40	4000K	CL*	xxxx lm (1400lm-4570lm) custom lumens consult factory	30	3000K	S 20° spot	
					35	3500K	M 30° med	
					40	4000K	W 50° wide	
					NDL		XW 90° extra wide	
					no downlight			

painted finish

- AN** silver anodized
- ANB** anodized black
- BS** brass
- BU** blue
- BZ** bronze
- CP** champagne
- GM** gun metal
- MB** military blue
- MW** matte white
- OR** orange
- RD** red
- SS** satin silver
- TG** textured gray
- YO** yellow

premium finish

RAL specify RAL#



job name:
 type:

glo.stk.4™ spec sheet 90CRI

LED

body illumination

flexible planar LED lighting sheet in 3000K, 3500K, or 4000K (90CRI), utilizing emitters rated at >77,000hrs L70 per TM21-11 from LM80 data. silver braid power cord standard.

downlight (optional)

COB in 3000K, 3500K, or 4000K (90 CRI) rated >36,000 hours L70 (6.8K) per LM-80 test data, 71,000 hours projected life per IEM TM-21. four beam spreads to choose.

downlight optics

LEDiL® Angelina 82mm dia 31mm high (RoHS compliant) available in 20° spot, 30° medium, 50° wide with specular anodized finish. 90° extra wide features matte white highly reflective finish. color mixing sublens standard. standard mounting clamp allows for easy replacement of reflector in field. the typical total beam angle is the full angle measured where the luminous intensity is half of the peak volume.

end caps

ribbed extruded aluminum end caps available in silver anodized and black anodized finishes. or choose from 12 standard painted finishes listed below.

driver

programmable, class 2, class P universal input (120-277v), constant current, 0-10v dimming, 1% minimum dimming level, PF >.9, THD <20%, protections include open and short circuit, overload and over temperature. remote driver enclosure standard. consult factory for distances over 33 feet.

diffuser

4" dia. .118" Satinice white acrylic cylinder, featuring light diffusion beads evenly distributed throughout the material for optimum light diffusion.

mounting

5" matte white canopy. single stainless steel cable and field adjustable gripper that allows for exact AFF mounting heights. silver braid power cord standard.

CDVR (optional)

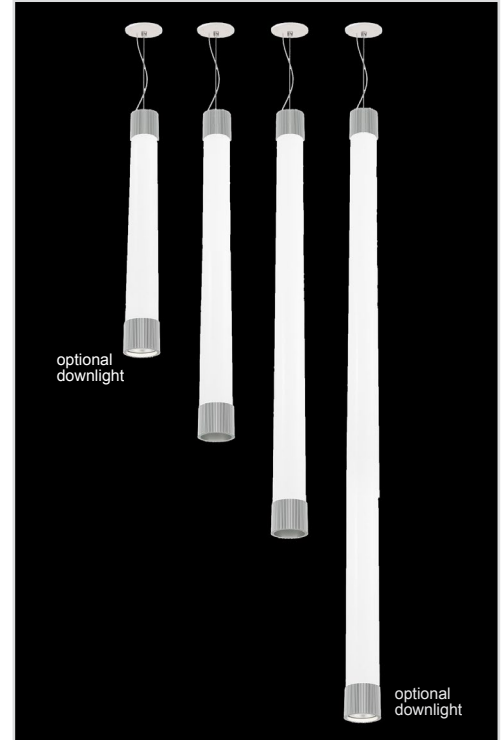
7"dia. spun .064" aluminum canopy in matte white. surface mounted driver.

finish

select from 2 anodized and 12 standard powder coat paint finishes listed below or specify RAL# for custom colors.

emergency

recommend use of inverter (by other).
 optional WREM: wired for remote EM battery (by other).

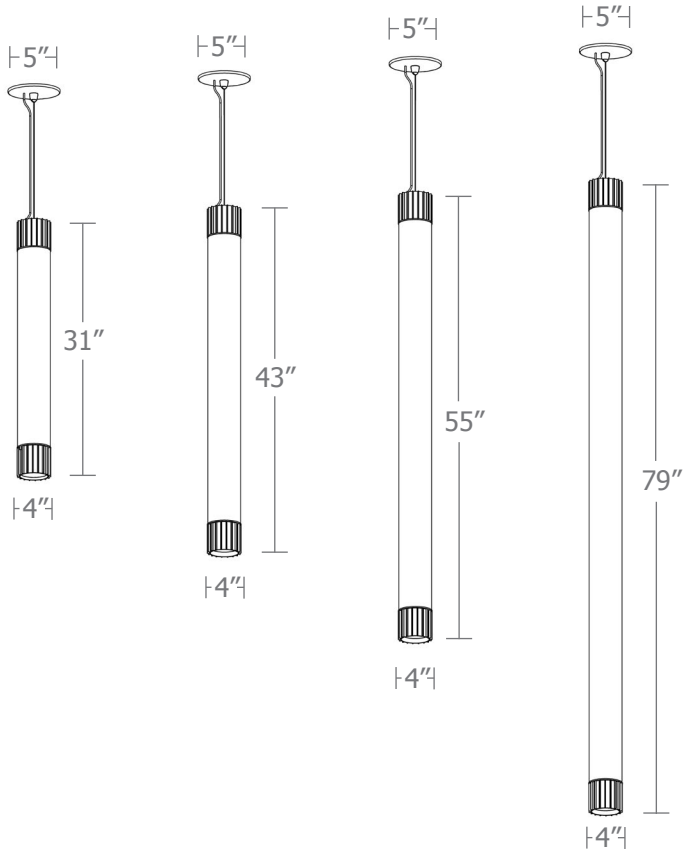
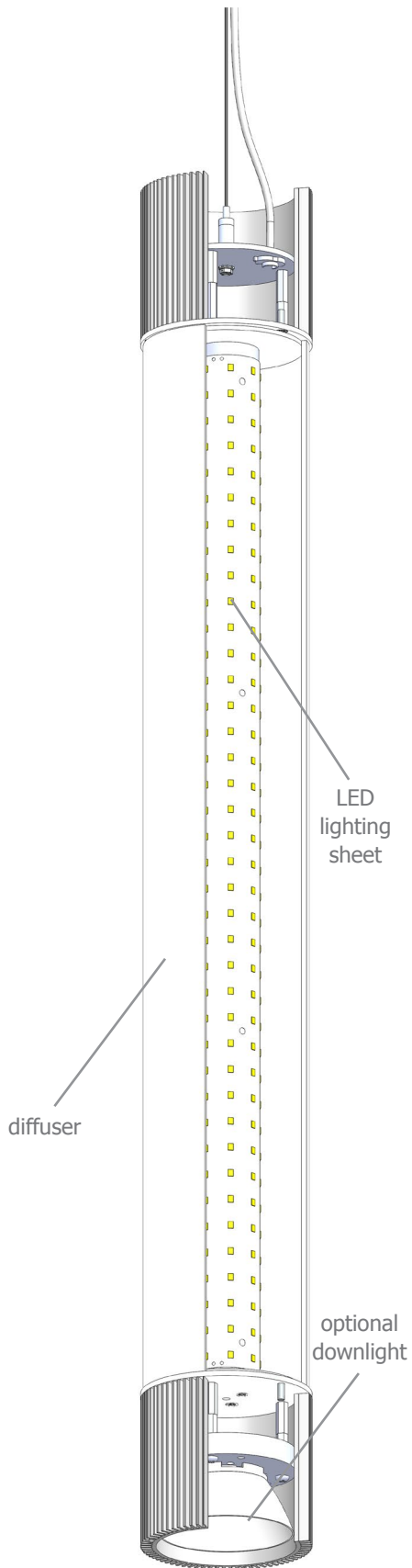


catalog number

--	--	--	--	--	--	--

size	body illumination		downlight		anodized finishes	options
	CCT	lumens	CCT	beam		
P9648.LV (4ft) 4"dia X 55"ht	30 3000K	LO 2400 lm	30 3000K	S 20° spot	AN silver anodized	6FT 72" cable
	35 3500K	HI 4300 lm	35 3500K	M 30° med	ANB anodized black	12FT 144" cable
	40 4000K	CL* xxxx lm (1900lm-6450lm) <small>custom lumens consult factory</small>	40 4000K	W 50° wide	NDL no downlight	XW 90° extra wide
P9672.LV (6ft) 4"dia X 79"ht	30 3000K	LO 3600 lm	30 3000K	S 20° spot	BS brass	WREM wired for remote EM battery pack <small>(by other) (see note above)</small>
	35 3500K	HI 6450 lm	35 3500K	M 30° med	BU blue	ELD EldoLED*
	40 4000K	HX 7500 lm	40 4000K	W 50° wide	NDL no downlight	XW 90° extra wide
		CL* xxxx lm (3000lm-9100lm) <small>custom lumens consult factory</small>			CP champagne	
					GM gun metal	
					MB military blue	
					MW matte white	
					OR orange	
					RD red	
					SS satin silver	
					TG textured gray	
					YO yellow	
					premium finish	
					RAL specify RAL#	



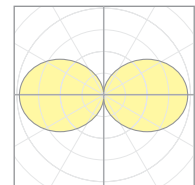


Calculation Table

The application of a Light Loss Factor is required to:

- match the lumen output for the power module specified
- incorporate the increased lumen output due to LED/Driver upgrades

Cat No		Delivered* Lumens	Watts 120V / 277V	IES File #	LLF to be applied
P9624.LV	LO	1400	15	12206	.67
P9624.LV	HI	2150	23	12206	1.03
P9636.LV	LO	1880	20	12206	.90
P9636.LV	HI	3750	40	12206	1.80
P9648.LV	LO	2400	25	12208	.56
P9648.LV	HI	4300	45	12208	1.00
P9672.LV	LO	3600	38	12208	.84
P9672.LV	HI	6450	68	12208	1.51
P9672.LV	HX	7500	79	12208	1.75

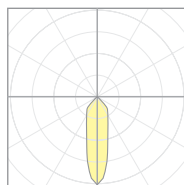


12208
P9348-40HI

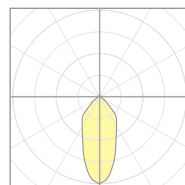
*delivered lumens based on 4000K, 90 cri

Downlight	Delivered* Lumens	Watts 120V / 277V	IES File #	LLF to be applied
	1300	14	20921 spot	.40
			20922 med	.40
			20923 wide	.40
			20924 x-wide	.40

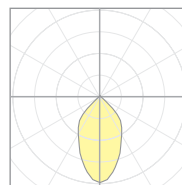
*delivered lumens based on 4000K, 90+ cri



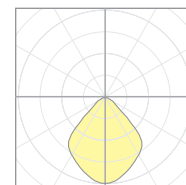
20921
P7506-S-40H3
S 20° spot



20922
P7506-M-40H3
M 30° med



20923
P7506-W-40H3
W 50° wide



20924
P7506-EW-40H3
XW 90° extra wide

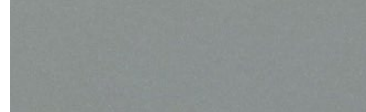
Powder Coat Paint Finishes



MW matte white



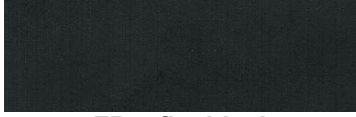
AP anodized paint
AN silver anodized



SS satin silver



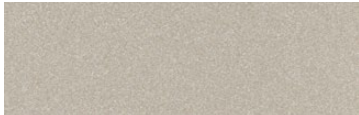
TG textured gray



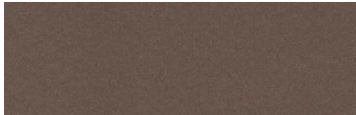
FB flat black



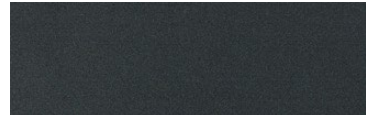
SB satin black
ANB anodized black



CP champagne



BZ bronze



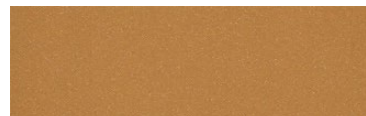
GM gun metal



OR orange 2011



BU blue 5017



BS brass



RD red 3020



YO yellow 1018



MB military blue

For accurate color verification, actual finish samples are available upon request.

Premium Finishes*



RAL#

*Available on select series. Consult product submittal for availability.